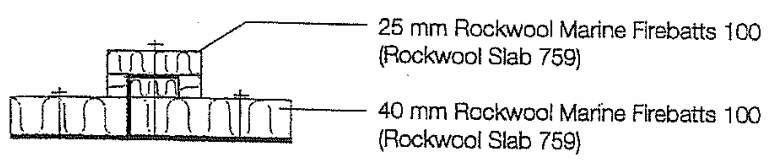


Pins placed with approx. 250 mm space



Representation in Question  
 A-60 Deck  
 28" x 28" Deck  
 \* 11 \*

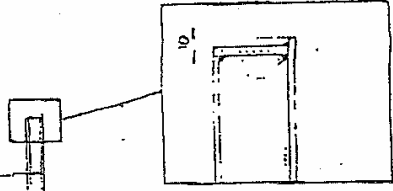
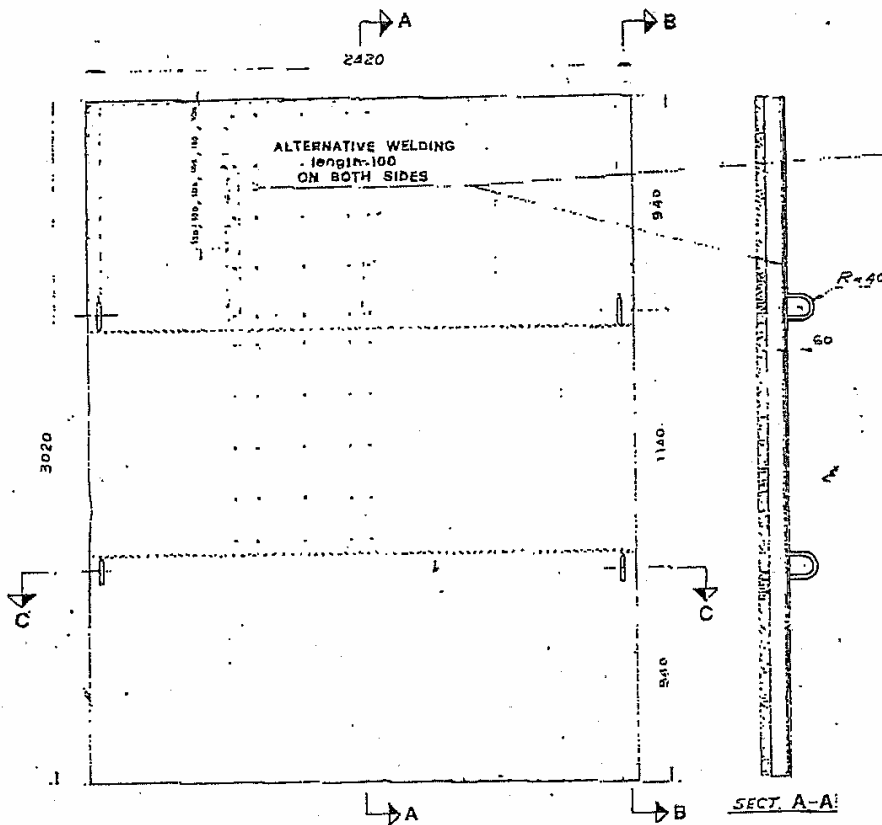
Date: 2004.25.08	<b>A-60 Deck</b> with Rockwool Marine Firebatts 100 (Rockwool Slab 759)	<b>ROCKWOOL®</b> Rockwool A/S
Drawing: EJ NO:04-03		
Scale 1:20		



28 12 2014

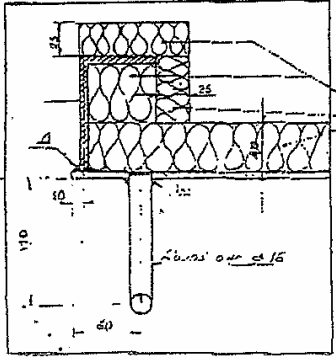
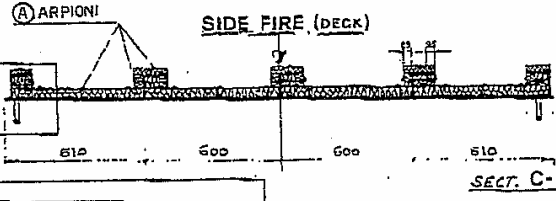
*J. K. Markers*

**DECK A60 - INSULATION**



L'isolamento viene applicato sulla faccia interna del simulacro esposta al fuoco. Il materiale isolante è lana di roccia in pannelli Rockwool tipo 759, applicati in un unico strato di spessore 90 mm fra i montanti. La parte superiore dei montanti viene ricoperta con uno strato dello stesso tipo di materiale, nella spessore di 25 mm.

- (A) Arpioni di filo di ferro nero ricotto  $\phi 3$  mm. Spaziati di circa 250 mm.
- (B) Pannello in lana di roccia Rockwool tipo 759 - densità  $100 \text{ kg/m}^3$  - spessori come da disegno - dimensioni  $1000 \times 600$  mm.



**BUREAU VERITAS Section 1**

*Acc 1000/113/05*

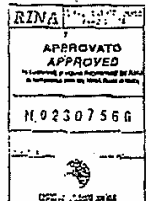
INSULATION MATERIAL ROCKWOOL TYPE 759 IN CONFORMITY WITH THE GENERAL CONDITIONS OF THE BRANCH OF THE EUROPEAN STANDARD EN 12165 IN ORDER TO CHECK THE COMPLIANCE WITH THE APPLICABLE REQUIREMENTS OF

*110 B A 754/18*

All particulars not shown on this document are assumed to be as per the requirements of the referenced texts, mainly constructional details.

Paris, 22 AUG 1997

*[Signature]*  
2. BENOIT



ROCKWOOL ITALIA S.r.l. DIS. N° 03/003/8  
VIA GIOTTO, 9 - 20145 MILANO  
SIMULACRO IN STRUTTURA METALLICA PER DIVISIONI TAGLIAFUOCO - PONTE A60  
MAT. ISOLANTE: LANA DI ROCCIA-PANNELLO 759

		STEEL
BULKHEAD	PLATE	4,5 (=0,5)
	STIFFENERS	65 x 65 (2x) 11,5 (=1)
	FLAT BAR	63 (2x) x 6 (=1)
DECK	PLATE	4,5 (=0,5)
	STIFFENERS	100 x 70 (2x) 11,5 (=1)
	FLAT BAR	100 (2x) x 8 (=1)